



2016

INTERNATIONAL 420 CLASS WORLD CHAMPIONSHIP
INTERNATIONAL 420 CLASS LADIES WORLD CHAMPIONSHIP
INTERNATIONAL 420 CLASS U17 WORLD CHAMPIONSHIP
15-23 JULY 2016 - SAN REMO, ITALY

[DP] denotes a rule for which the penalty is at the discretion of the International Jury.

[NP] denotes that a breach of this rule will not be grounds for a protest by a boat. This changes rule 61.1(a).

[SP] denotes a rule for which a standard penalty may be applied by the race committee without a hearing.

1. RULES

- 1.1 The regatta will be governed by the Rules as defined in *The 2013-16 Racing Rules of Sailing* (RRS)
- 1.2 No National Authority Prescriptions will apply.
- 1.3 Charter Boats - According to RRS Appendix G, Rule G3, "a boat chartered or loaned for an event may carry national letters or a sail number in contravention of her Class Rules".
- 1.4 If there is a conflict between languages the English text will take precedence.
- 1.5 The Sailing Instructions take precedence over the Notice of Race. This changes RRS 63.7.
- 1.6 Decisions of the International Jury will be final as provided in RRS 70.5.

2. [DP] [NP] IDENTIFICATION, CAMERAS AND ELECTRIC EQUIPMENT

- 2.1 Boats in specified fleets shall display bow numbers as in the Class Rules. The organizers will supply the bow numbers.
- 2.2 Each day, the first, second and third boats in series ranking at the beginning of the day shall wear yellow, blue and red bibs on the crew respectively while racing. The bibs will be provided by the Organizing Authority.
- 2.3 For split fleets, boats shall display a colored ribbon, corresponding to the fleet to which she has been assigned. The ribbons shall be fixed on the top of the main sail. The Organizing Authority will supply the ribbons.
- 2.4 Boats shall display required event sponsor advertising. The Organizing Authority will supply the advertising and instructions for their use.
- 2.5 Boats may be required to carry cameras, sound equipment or positioning equipment as specified by the Organizing Authority. Information from this equipment shall not be used by a boat as evidence in a hearing. This changes rule 63.6.

3. [DP] CODE OF CONDUCT

- 3.1 Competitors shall comply with any reasonable requests from a regatta official.

- 3.2 Competitors shall handle any boats or equipment provided by the Organizing Authority with proper care and seamanship, and in compliance with any written instructions.

4. NOTICE TO COMPETITORS

Notices to competitors will be posted on the official notice board, located on the ground floor of the Club.

5. CHANGES TO SAILING INSTRUCTIONS

Any change to the sailing instructions will be posted before 10:00 hours on the day it will take effect, except that any change to the schedule of the first races of the day will be posted by 20:00 hours on the day before it will take effect. Any reassignment of racing areas can be done 30 minutes before flag D is displayed or 30 minutes before flag AP is removed ashore – see SI 6.2 and 6.3.

6. SIGNAL MADE ASHORE

- 6.1 Signals ashore will be displayed at the official flag poles located on the terrace of the Club House. When a signal is displayed over a racing area or fleet flag, it applies to that racing area or fleet only. This changes the Race Signal preamble.
- 6.2 When flag AP is displayed ashore, '1 minute' is replaced with 'not less than 45 minutes' in race signal AP.
- 6.3 [DP] [NP] Boats shall not leave the shore until flag D is displayed ashore. The warning signal will be made not less than 45 minutes after flag D is displayed or not before the scheduled time, whichever is later. Boats shall not leave allocated berth until this signal is made'.

7. FORMAT OF RACING

- 7.1 The format of racing is as follows:

<i>Number of entries</i>	<i>Format</i>	<i>Number of fleets</i>
Up to 50	single fleet series (12 races)	1
51 to 100 entries	qualifying series and final series (6 races each)	2
More than 100 entries	qualifying series and final series (6 races each)	3

The Organizing Authority may amend the numbers above when deciding to split a fleet into groups.

7.2 Qualifying Series

- (a) Boats will be assigned to fleets Yellow, Blue (and Red when needed), of as near as possible equal size. Initial assignments will be made by a seeding committee appointed by the 420 Class Technical Delegate. Those assignments will be posted by 20:00 hours on 17 July.
- (b) Boats will be reassigned to fleets after each day of racing, except if on the first day fewer than two races are completed by all fleets in that event. If all fleets have completed the same number of races, boats will be reassigned on the basis of their

ranks in the series. If all fleets have not completed the same number of races the series scores for reassignment will be calculated for those races, numbered in order of completion, completed by all fleets. For three fleets, and similarly for any other number, reassignments will be made as follows:

Rank in Series	Fleet Assignment
First	Yellow
Second	Blue
Third	Red
Fourth	Red
Fifth	Blue
Sixth	Yellow
Seventh	Yellow
Eight	Blue
Ninth	Red
and so on	

If two or more boats have the same rank, they will be entered in the left column in the order of fleets in SI 7.2(a).

- (c) Assignments will be based on the scores available at 21:00 hours that day regardless of protests or requests for redress not yet decided.
- (d) If all fleets have not completed the same number of races by the end of a day, the fleets with fewer races will continue racing the following day until all fleets have completed the same number of races. All boats will thereafter race in the new fleets.

7.3 Final Series

- (a) Boats will be assigned to final series fleets Gold, Silver (and Bronze when needed) on the basis of their rank in the qualifying series. There will be the same number of fleets in the final series as there were in the qualifying series. The final series fleets will have, as nearly as possible, equal size but none larger than the Gold fleet. Boats with the best qualifying series rank will race all final-series races in the Gold fleet, boats with the next best qualifying series ranks will race in the Silver fleet, etc.
- (b) Any recalculation of qualifying series ranking after boats have been assigned to final series fleets will not affect the assignments except that a redress decision may promote a boat to a higher fleet.

7.4 Single Series

If the event is sailed as a single fleet, then the Championship will be scheduled as 12 final single series races.

8. SCHEDULE OF RACES

8.1 Daily schedule:

Day 1	15 July	Registration and equipment inspections	09:00-19:00
Day 2	16 July	Registration and equipment inspections	09:00-19:00
Day 3	17 July	Registration and equipment inspections Practice Race: warning signal Opening Ceremony	09:00-18:00 14:00 19:00
Day 4	18 July	Qualifying series, First warning signal	12:00
Day 5	19 July	Qualifying series	TBA
Day 6	20 July	Qualifying series	TBA
Day 7	21 July	Qualifying/Final series	TBA

Day 8 22 July	Qualifying/Final series	TBA
Day 9 23 July	Qualifying/Final series Prize Giving and Closing Ceremony	TBA 19:00

8.2 Number of Races:

Class	Qualification Series	Final Series	Total Number of Races	Maximum Races per Day
Single fleet	-	-	12	3
Split fleet	6	6	12	3

8.3 Races not sailed on the scheduled day may be sailed on a following day at the discretion of the race committee.

8.4 The warning signal for each succeeding race will be made as soon as practical.

8.5 To alert boats that a race or sequence of races will begin soon, the orange starting line flag will be displayed with one sound for at least five minutes before a warning signal is displayed.

8.6 On the last day of racing, no warning signal will be made after 17:00 hours.

9. **CLASS FLAGS**

Class flags are as follows:

Open Championship divided into fleets.	Yellow, Blue or Red flag
Ladies Championship single fleet	Int. 420 Class flag
Ladies Championship divided into fleets	Int. 420 Class flag plus Yellow or Blue
U17 Championship fleet	Green flag with 420 logo

10. **RACING AREAS**

10.1 SI Appendix A shows the location of the racing areas.

11. **THE COURSES**

11.1 The diagrams in SI Appendix B show the courses, the course designations, the approximate angles between legs, the order in which marks are to be passed, and the side on which each mark is to be left.

11.2 No later than the warning signal the race committee signal vessel will display the approximate compass bearing of the first leg.

12. **MARKS**

Racing Area 1

12.1 Marks 1, 2, 3 (3s/3p) and 4 (4s/4p), will be ORANGE. New marks will be ORANGE with a black band.

12.2 The starting marks will be the race committee starting boat at the starboard end and a boat displaying an orange flag at the port end. See Appendix B.

12.3 The finishing marks will be the race committee finishing boat at the port end and a buoy orange, at the starboard end. See Appendix B.

Racing Area 2

- 12.4 Marks 1, 2, 3 (3s/3p) and 4 (4s/4p), will be YELLOW. New marks will be YELLOW with a black band.
- 12.5 The starting marks will be the race committee starting boat at the starboard end and a boat displaying an yellow flag at the port end. See Appendix B.
- 12.6 The finishing marks will be the race committee finishing boat at the port end and a buoy yellow, at the starboard end. See Appendix B.

13. THE START

- 13.1 The starting line will be between staffs displaying an orange flag on the starting marks.
- 13.2 [DP] Boats whose warning signal has not been made shall avoid the starting area. The starting area is defined as a rectangle 50 meters from the starting line and marks in all directions.
- 13.3 If flag U has been displayed as a preparatory signal, 'no part of a boat's hull, crew or equipment shall be in the triangle formed by the ends of the starting line and the first mark during the last minute before their starting signal. If a boat breaks this rule and is identified, she will be disqualified without a hearing but not if the race is restarted or postponed or abandoned before the starting signal'. This changes RRS 26, Starting Races. When flag U is used at the preparatory signal, RRS 29.1 *Individual recall* shall not apply. The scoring abbreviation for a flag U penalty is UFD. This changes RRS A11 *Scoring Abbreviations*.
- 13.4 A boat starting later than four minutes after her starting signal will be scored DNS. This changes RRS A4 and A5.

14. CHANGE OF THE NEXT LEG OF THE COURSE

- 14.1 To change the next leg of the course, the race committee will: (a) lay a new mark, (b) move the finish line or (c) move the leeward gate. When the new mark is laid, the original mark will be removed as soon as practicable. When in a subsequent change a new mark is replaced, it will be replaced by an original mark.
- 14.2 Except on gates, boats shall pass between the race committee boat signaling the change of course and the nearby mark, leaving the mark to port and the race committee boat to starboard. This changes RRS 28.

15. THE FINISH

The finishing line will be between orange flags on finishing marks.

16. PENALTY SYSTEM

- 16.1 Appendix P, Special Procedures for RRS 42, will apply.
- 16.2 RRS P2.3 will not apply and RRS P2.2 is changed so that it will apply to any penalty after the first one.

17. TIME LIMITS AND TARGET TIMES

- 17.1 Time limits and target times for the first boat are as follows:

Time Limit	Mark 1 Time Limit	Finish Window	Target Time
70	25	15	45

- 17.2 If no boat has passed Mark 1 within the *Mark 1 time limit* the race will be abandoned.
- 17.3 Failure to meet the target time will not be grounds for redress. This changes RRS 62.1(a).
- 17.4 Boats failing to finish within the time stated in the Finish Window after the first boat sails the course and finishes will be scored Did Not Finish (DNF). This changes RRS 35, A4 and A5.

18. PROTESTS AND REQUESTS FOR REDRESS

- 18.1 Protest forms are available from the protest information desk located at the Race Office, Protests and request of redress or reopening shall be delivered there within the appropriate time limit.
- 18.2 For each fleet the protest time limit is 60 minutes after the last boat has finished the last race of the day.
- 18.3 Notices will be posted within 30 minutes of the protest time limit to inform competitors of hearings in which they are parties or named as witnesses. Hearings will be held in the protest room beginning at the time posted. Hearing may be scheduled to begin up to 30 minutes before the end of the protest time.
- 18.4 Notices of protests by the race committee or protest committee will be posted to inform boats under RRS 61.1(b) within the protest time limit.
- 18.5 A list of boats that have been penalized under Appendix P for breaking RRS 42 will be posted ASAP after racing at the Official Notice Board.
- 18.6 Penalties for breaches of SI marked as [DP], rule 55 and breaches of the Class Rules are at the discretion of the protest committee.
- 18.7 On the last day of the qualifying series or on the last scheduled day of racing, a request for reopening a hearing shall be delivered:
- (a) within the protest time limit if the requesting party was informed of the decision on the previous day.
 - (b) no later than 30 minutes after the requesting party was informed of the decision on that day.

This changes RRS 66.

19. SCORING

- 19.1 Single Fleet event:
There will be a maximum of **12** races.
- (a) 5 races are required to be completed to constitute a series.
 - (b) When 5 or more races have been completed, a boat's score will be the total of her race scores excluding her worst score.
- 19.2 The scoring abbreviation for a discretionary penalty under S.I.18.6 will be DPI.
- 19.3 To request correction of an alleged error in posted race or series results, a boat may complete a scoring enquiry form available at the Race Office.

19.4 Split Fleet event:

- (a) All 5 qualifying races are required to be completed to constitute the regatta.
- (b) For the qualifying series, RRS A4.2 is changed so that those scores are based on the number of boats assigned to the largest fleet.
- (c) All races scores from the qualifying series will be carried forward.
- (d) Final series fleets will be scored separately and different final series fleets need not have completed the same number of final races.
- (e) For final ranking, boats assigned to the Gold fleet will be ranked higher in the regatta than the boats assigned to the Silver fleet, and so on.

20. [DP] [NP] [SP] SAFETY REGULATIONS

- 20.1 Boats not leaving the marina for a scheduled race shall promptly notify the Race Office.
- 20.2 A boat that retires from racing shall notify the race committee before leaving the racing area, or if that is not possible, shall notify the Race Office as soon as possible after returning ashore.
- 20.3 [SP] Check-out and check-in: All Competitors must sign each day:
 - (a) before leaving to race on each schedule day.
 - (b) within the protest time limit after returning ashore.
 - (c) the tally point will be close to the official notice board.

21. [DP] REPLACEMENT OF CREW OR EQUIPMENT

- 21.1 Substitution of competitors will not be allowed without prior written approval of the Race Committee.
- 21.2 Substitution of damaged or lost equipment will not be allowed unless approved by the race committee. Requests for substitution shall be made to the committee in writing at the first reasonable opportunity. Forms will be available at the Race Office.

22. [DP] EQUIPMENT AND MEASUREMENT CHECKS

A boat or equipment may be inspected at any time for compliance with the Class Rules and sailing instructions. On the water, a boat shall act in accordance with any instruction by the race committee measurer/equipment inspector to proceed immediately to a designated area for inspection (see also Equipment Inspection Instructions).

23. OFFICIAL BOATS

Official boats will be identified as follows:

Official Boat	Flag
Race Committee	Yacht Club Vessel
Jury	"J"
VIP	Flag with "VIP"
Press/Media boats	Green Flag "P"
Safety Boat	White Flag "R"
Medical	Flag "+"
Measurer & Gear	Flag Blue with "M"

24. [DP] SUPPORT BOATS

- 24.1 Support boats with team leaders, coaches and other support personnel shall stay outside areas where boats are racing from the time of the warning signal for the first fleet to start until all boats have finished or the race committee signals a postponement, general recall or abandonment.
- 24.2 During any starting sequence, support boats shall stay at least 50 meters below the starting line and its extensions.
- 24.3 Support boat shall be marked with the applicable national sail letters (see RRS G1.1) clearly displayed on both side of the boat in strongly contrasting colors at all times while afloat. The minimum height for the letters shall be 200 mm.

25. [DP] [NP] TRASH DISPOSAL

As sailors, we seek to protect and restore our oceans and coastal waters. See RRS 55. Trash may be placed aboard support and race committee boats.

26. [DP] BERTHING

When berthed, boats shall be kept in their assigned places in the boat park.

27. [DP] RADIO COMMUNICATION

A boat shall neither make radio transmissions while racing nor receive radio communications not available to all boats, except in an emergency or when using equipment provided by the race committee. This restriction also applies to mobile telephones

28. PRIZES & TITLES

Prizes & Titles will be awarded as defined in Notice of Race 16 & 17.

29. TROPHIES

- 29.1 The International 420 Class World Championship Challenge Cup
This trophy is awarded to the highest placed boat in the Open Championship.
First awarded Bendor, France, 1961.
- 29.2 The International 420 Class Ladies World Champion Challenge Cup
This trophy is awarded to the highest placed boat in the Ladies Championship.
First awarded Nieuwpoort, Belgium 1986.
- 29.3 William Sanchez Trophies (2)
These trophies are awarded to the highest placed boat, both aged 16 or under, at the end of the year. One for the Open fleet and one for the Ladies fleet.
First awarded La Rochelle, France 2000
- 29.4 The Huck Scott Memorial Trophy
This trophy is awarded to the youngest boat crew competing in the Championship, in either the Open or the Ladies. The lowest combined age (helm and crew) at the end of the year will be used.
First awarded Fremantle, Australia, 1995
- 29.5 The John Merricks Trophies (2)
Awarded to the highest placed team in each of the Open and Ladies fleet, both aged 18 or under, at the end of the year.
First awarded Hayling Island, England, 2003

29.6 Francis Mouvet Trophy

This trophy will be awarded to the nation who has the highest placed 3 boats in the World Championship using both the World and Ladies fleets.

First awarded for pre-world fleet race, Italy 1991. 420 World Team Race Trophy 1996 – 2003. (No team race due to weather 2004). National Team award as above from 2005.

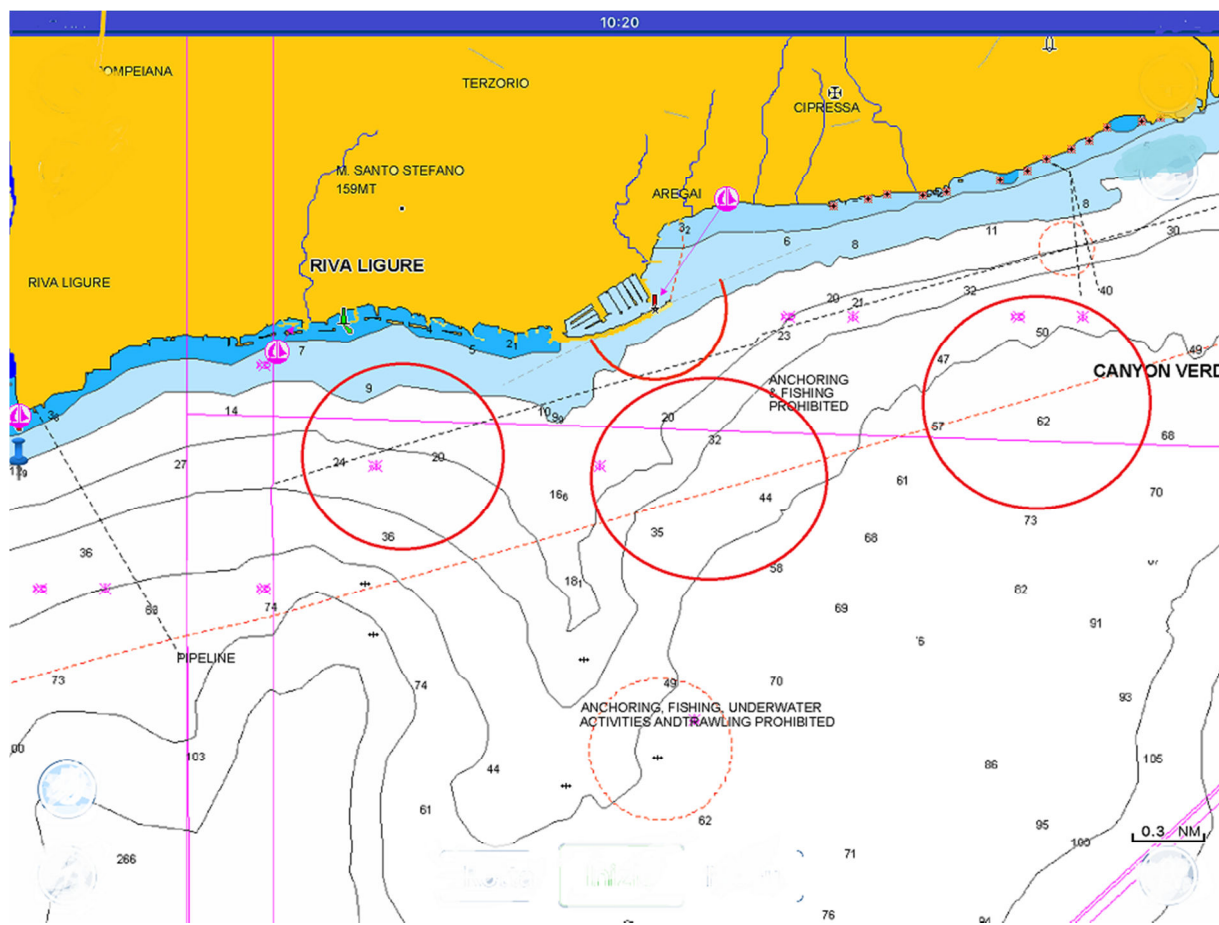
30. **DISCLAIMER OF LIABILITY**

Competitors participate in the regatta entirely at their own risk. See RRS 4, Decision to Race. The Organizing Authority will not accept any liability for material damage or personal injury or death sustained in conjunction with or prior to, during, or after the regatta.

31. **INSURANCE**

Each participating boat shall be insured with valid third party liability insurance with a minimum cover EUR 1.500.000 per event or equivalent, a certificate of such insurance shall be shown during registration.

Appendix A – Racing Area



Appendix B - Courses

