



CASINÒ SANREMO

## YACHT CLUB SANREMO

*In collaboration with Circolo Velico Capoverde*

### PAUL&SHARK TROPHY

23 to 26 March

# SAILING INSTRUCTIONS

#### Notations:

The notation **[NP]** in a *rule* means that a breach of the *rule* may not be subject of a protest by a boat  
The notation **[DP]** in a *rule* means that the penalty for a breach of the *rule* may, at the discretion of the protest committee, be less than disqualification.

#### 1 RULES

The regatta will be governed by the rules defined in the Racing Rules of Sailing (RRS) World Sailing 2017-2020.

The Rules of the International Dragon Association.

In the event of conflict between the N.O.R. and S.I., the Sailing Instruction shall prevail (this change RRS 63.7)

If a conflict exists between languages, the text in English prevails.

Advertising: Boats may be required to display advertising chosen and supplied by the Organizing Authority in accordance with regulation 20.4.1

#### 2 NOTICE TO COMPETITORS

Notices to the competitors will be posted on the Official Notice Board near the Club house.

#### 3 CHANGES TO SAILING INSTRUCTIONS

Any change to the Sailing Instructions will be posted before 09.00 on the day it will take effect, except that any change in the schedule of races will be posted before 19.00 on the day before it will take effect.

#### 4 SIGNALS MADE ASHORE

4.1 Signals made ashore will be displayed at the official signal mast

4.2 Flag AP displayed alone with two sounds signals means "The warning signal will be made not less than **45** minutes after Flag AP is lowered." Boats are requested not to leave the harbour until Flag AP is lowered. This changes Race Signal AP, in the RRS .

#### 5 SCHEDULE OF RACES

5.1

Thursday, March 23

01.00 PM . First warning signal, races

Friday, March 24

10.30 AM. Races . Paul & Shark day.

Saturday, March 25

10.30 AM. Races

Sunday, March 26

10.30 AM Races – Prize giving Ceremony

5.2 8 races are scheduled.

5.3 It is intended to sail 2 races per day. However, an extra race may be sailed in case of being behind schedule or foreseen delay.

5.4 When more than one race is held on the same day, the warning signal for the next succeeding race will be made as soon as practicable. To alert boats that a race will begin soon or after a long postponement an orange flag will be displayed for at least five minutes before the warning signal is displayed.

5.5 On the last day of the regatta no warning signal will be made after 3:00 pm

## **6 RACING AREA**

The bay of Sanremo. **Attachment A shows the racing course.**

## **7 THE COURSE, THE CHANGING AND SHORTENING**

7.1 The courses will be windward/leeward.

**[NP]** 7.2 If the weather conditions are profitable, mark 1 will be approximately 2.0 n.m., from the middle of the starting line.

**[NP]** 7.3 No later than the warning signal, the race committee signal boat will display the approximate compass bearing to mark 1.

7.4 Courses:

COURSE N.1: Start – 1 – 2 – Gate 3 (S) 3 (P) – 1 – 2 - Finish

COURSE N.2: Start – 1 – 2 – Gate 3 (S) 3 (P) – 1 – 2 – Gate 3 (S) 3 (P) - Finish

7.5 Courses can be shortened and they will be signalled by an Official boat of the Race Committee in compliance with Rule 32. In case of shortening course signalled at mark 2, if the “S” flag will be display with at the flag “C” boats shall then go directly to the finish line as shown in annex A. This change Rule 32.2 (a) and Rule “Race signal S”.

7.6 If necessary, course changes can be performed and they will be signalled in compliance with Rule 33 of R.R.S. In case of course change, mark 2 will be no more in place.

7.7 At the leeward gates, boats shall sail between the gate marks from the direction of the previous mark and round either gate mark. If one of two gate marks is missing and has not been replaced as described in RRS 34 then the remaining mark shall be rounded to port. This changes RRS 34.

## **8 MARKS**

8.1 Marks 1, 2, 3(S) and 3(P) will be **orange**.

8.2 New marks as provided will be yellow. In case of another change of course, the new mark is the original one.

## **9 THE START**

9.1 Races will be started using Rule 26 with the warning signal given 5 minutes before the starting signal. The class flag is the letter D.

9.2 The starting line will be between a staff displaying an orange flag on the race committee boat at starboard end and a staff displaying an orange flag on the race committee at the port end.

9.3 The warning signal “D” flag of International Flag Code and all starting signals will be made from the race committee boat at the right side of the starting line.

9.4 The Committee boat can have a mark secured to its aft by a rope; this mark, with the relevant rope, has to be considered as an integrating part of the Committee boat.

9.5 A boat starting later than 10 minutes after her starting signal will be scored "Did not start". This changes rule A4.2.

## **10 THE FINISH**

10.1 The finishing line will be between the orange flag pole on the Race Committee boat and a yellow buoy.

10.2 The race committee boat on, or in the proximity of the finish line may maintain her position by using their engines, for this are not considered shall not be grounds for redress under rule 62.1 (a)

## **11 PENALTY SYSTEM**

11.1 As a change to Rule 44.1, the Two-Turns penalty is replaced by One-Turn penalty.

**[NP] [DP]** A boat that has completed a penalty shall produce the appropriate acknowledgement form to the Race Committee within the protest time limit. This modify to Rule 44.

## **12 TIME LIMIT**

12.1 Time limit is 150 minutes.

**[NP]**12.2. Boats failing to finish within **30** minutes after the first boat finishes will be scored Did not Finish. This changes rules 35 and A4 e A5

### **13 PROTESTS**

13.1 A boat intending to protest shall inform the Race Committee immediately after the finishing of the related race, this modify to Rule 61 of RRS.

Protests shall be written as required by R.R.S. and produced within 60 minutes after the last boat finished the last race of the day. The protest time limit will be posted in the official notice board.

The hearing summoning notice shall be posted on the official notice board within 30 minutes after the protest time limit.

**[NP] [DP]** 13.2 The penalty for any infringement of any applicable rule, excluding Part.2 rules, shall be at the sole discretion of the Jury and may include no penalty.

### **14 SCORING**

14.1 The low points point scoring system of rule Appendix A will apply.

14.2 Three (3) races are required to be completed to constitute a series.

14.3 When 4 races or fewer have been completed, a boat's series score will be the total of her race scores. When more than 4 races have been completed, a yacht's series score will be the total of her race scores excluding her worst score.

### **15 SAFETY REGULATIONS**

**[NP] [DP]** A boat that retires from a race shall notify the race committee as soon as possible.

### **16 REPLACEMENT OF CREW**

**[NP] [DP]** Substitution of competitors will not be allowed without prior written approval of the Race Committee.

### **17 EQUIPMENT AND MEASUREMENT CHECKS**

**[NP] [DP]** A boat or equipment may be inspected at any time for compliance with the Class Rules and Sailing Instructions. Upon instruction from the race committee a boat shall proceed immediately to a designated area for inspection.

### **18 SUPPORT BOATS**

**[NP] [DP]** 18.1 Support, including coach, press private and spectator boats shall register at the Race Office during the registration period and be issued with an identity flag, such flag to be worn at all times when afloat. The person in charge of the competing boat to which support boats are attached shall acknowledge the presence of a support boat on his registration form.

**[NP] [DP]** 18.2 Coach/Support boats shall not tow competitors out to the race course (unless requested to by the Race Committee) and may only tow boats in after the last competitor has finished the last race of the day.

**[NP] [DP]** 18.3 Subject to SI 22.4, team leaders, coaches and other support boats shall stay more than 150 metres to leeward of the starting line and from the leeward marks and from any racing Dragon from the time of the preparatory signal until all boats have finished the last race of the day, or all races are abandoned. Support boats may be allowed up the course on one specified side only if special dispensation has been granted by the IDA (via application to the Jury) for reasons of safety, health, tourism, spectating, or sponsor's request. Such boats applying for dispensation may not have a coach or World Sailing category 3 sailors on board. Support boats that have been granted dispensation will be issued with a different colour flag to Coach Boats. (see Appendix 2).

**[NP] [DP]** 18.4 At all times, support boats shall comply with the directions given by the Race Committee. In particular this includes assisting with rescues when requested to do so.

**[NP] [DP]** 18.5 Coach/support boats shall not contact their connected boats between races.

**[NP] [DP]** 18.6 Support boats must be on call on VHF Channel 72 at all times.

### **19 HAUL-OUT RESTRICTIONS**

**[NP] [DP]** All yachts shall be afloat before **11:00 of Thursday, March 23** and shall not be hauled out during the regatta except with, and according to, the terms of prior written permission of the Race Committee.

### **20 PLASTIC POOLS AND DIVING EQUIPMENT**

**[NP] [DP]** Underwater breathing apparatus, including snorkels, plastic pools or their equivalent shall not be used below the waterline after **11:00 of Thursday, March 23**.

### **21 VHF RADIOS**

**[NP] [DP]** VHF Radios may be used on a receive only basis whilst racing. The official channel is 72.

### **22 OFFICIAL BOATS**

**[NP]**The Race Committee Boats will be identified through display of **the Yacht Club Sanremo Burgee**. Jury boats will display a flag marked "J" or "JURY".

## 23 LIABILITY DISCLAIMER

Competitors participate in the regatta at their own risk. See rule 4 Decision to Race. The organising authority will not accept any liability for material damage or personal injury or death sustained in conjunction with, or prior to, or during or after the regatta.

## 24 INSURANCE

[NP] 24.1 Each participating yacht shall be insured with valid third party liability insurance with a minimum cover of € 1.500.000,00 per event or the equivalent.

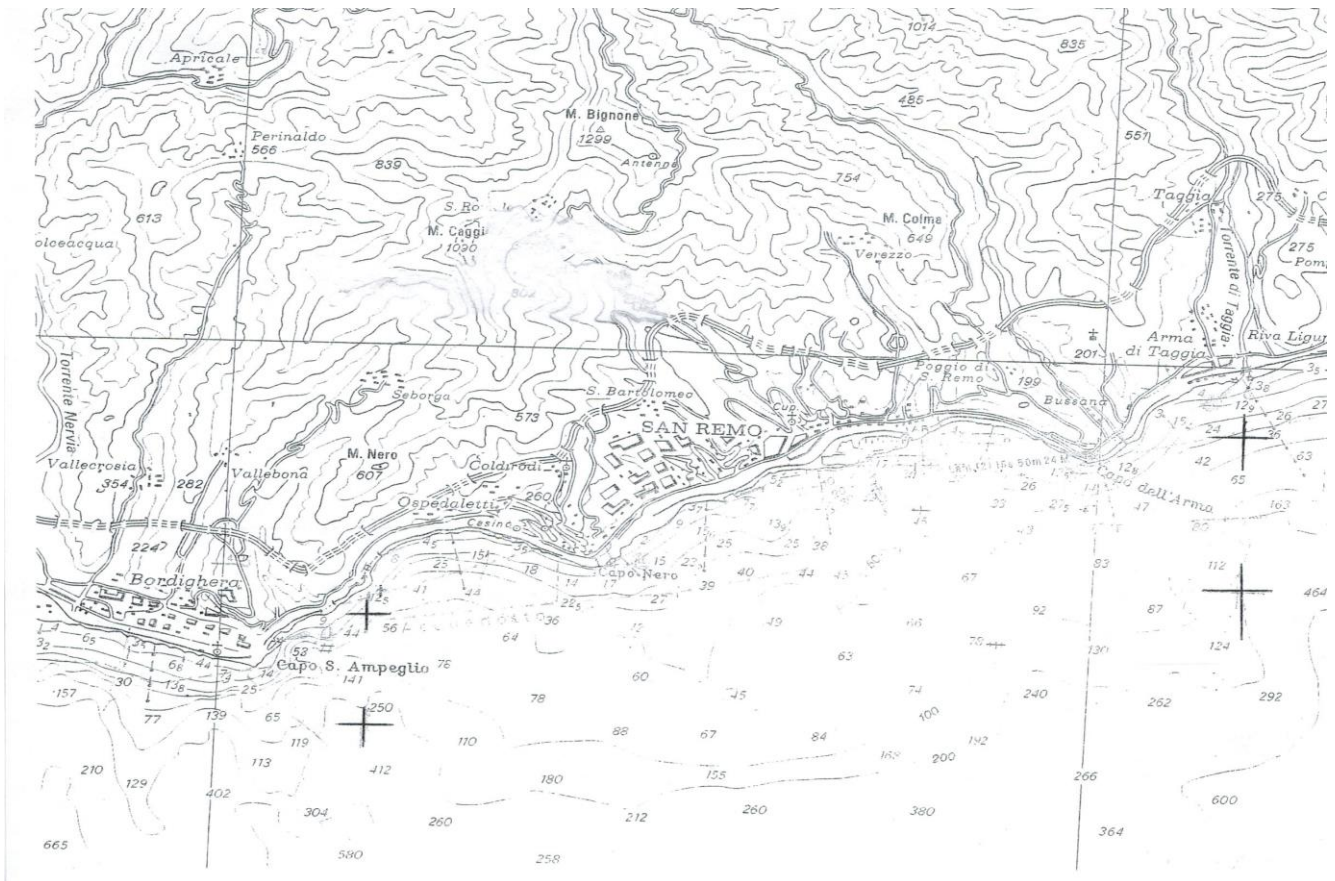
24.2 Competitors are advised to effect their own personal accident insurance.

## 25. ENVIRONMENT RULES

[NP] [DP] It's forbidden to throw in the sea all type of rubbish. On the port please use the specific container.



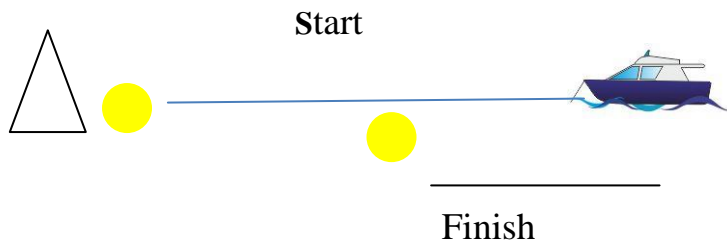
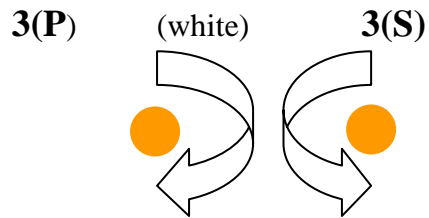
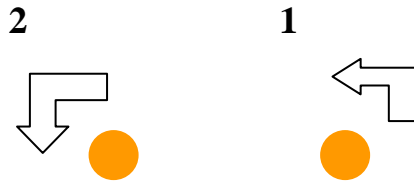
## ATTACHMENTS "A"



# ATTACHMENT B

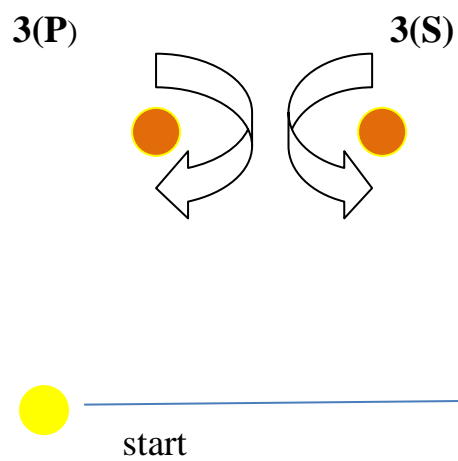
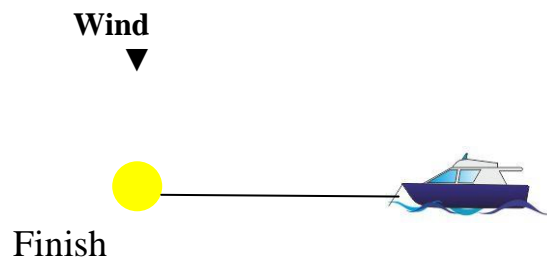
## COURSE 1

Wind  
▼



Course N°1 pennant I.F.C. N°1  
Start – 1 – 2 – Gate 3(s) 3(p) – 1 – 2 - Finish

# COURSE 2



Course N° 2 pennant I.F.C. N°2

Start – 1 – 2 – Gate 3(s) 3(p) – 1 – 2 - Gate 3(s) 3(p) – Finish